



1702 Peninsula Drive • Erie, PA 16505-4243
P.O. Box 8370 • Erie, PA 16505-0370
Phone: 814-833-1154 • Fax: 814-838-3473
www.generalpartitions.com
Email: info@generalpartitions.com

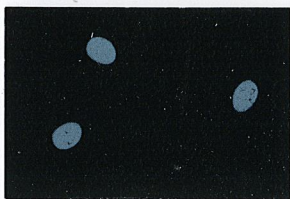
**All colors may be available for our
2 DAY Ultra Express Shipping**
Standard lead time is 3 weeks

HIGH DENSITY POLYMER

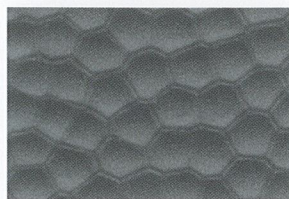
General's **H.D.P.E.** toilet partitions, showers, and dressing compartments are manufactured using high density polymer resin. Their surface has a beautiful textured finish and the color is solid throughout.

STANDARD COLORS

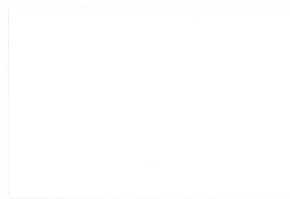
Colors shown on this card match actual finish colors as accurately as possible, but may vary slightly from finished product. General Partitions reserves the right to substitute similar colors and textures available at time of shipment. Actual product samples are available upon request.



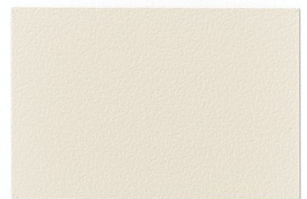
205 GALAXY



501 HAMMERED STAINLESS



225 DESIGNER WHITE



228 LINEN



236 STERLING



220 COBALT



240 COLONIAL



242 TITANIUM



250 ONYX



260 SANDSTONE



262 LATTE



238 OYSTER



272 FERN



274 HUNTER



290 BORDEAUX



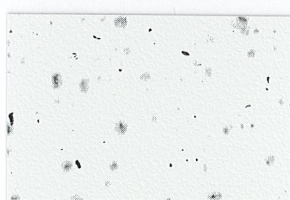
295 CRANBERRY



608 QUARTZ



601 TOPAZ



604 LIMESTONE



605 GRANITE